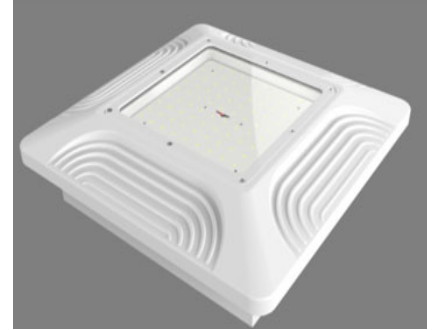


CANOPY LIGHT



Features:-

- * Original Philips SMD3030 which up to 130lm/W.
- * Multiple mounting options – Multiple options for mounting convenience, and can mount to recessed outlet boxes or directly to surfaces.
- * Better load carrying capability and heat dissipation with thicken design for die casting radiator.
- * IP65 waterproof, dust-proof, explosion-proof and anti-corrosion.
- * Tiny package and lighter, lower freight cost, more competitive in the market.
- * High efficiency constant current drives, Efficiency of power supply is more than 70%.

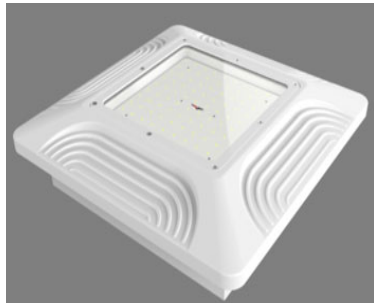
Product Code	BL-GL-01	BL-GL-02	BL-GL-03	BL-GL-04	BL-GL-05
Power	60W	80W	100W	120W	150W
Input Voltage	100-277V / 180-528VAC 50/60Hz				
Beam angle	120°				
CCT	2700K/ 3000K / 4000K / 5000K/ 5700K / 6500K				
Dim	1-10V / Dali / PWM /pre-program dimmable				
Driver /LEDs	Sosen Driver				
Materials	Die casting aluminum heat sink				
Light efficiency	130lm/W				
Working Temperature	-40°C - 55°C				
Net Weight	3.98Kg	3.9Kg	6.42Kg	6.53Kg	6.61Kg
IP Rating	IP:66 Waterproof				
Lifetime	50,000hrs				

CANOPY LIGHT

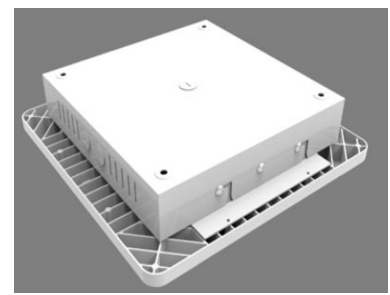
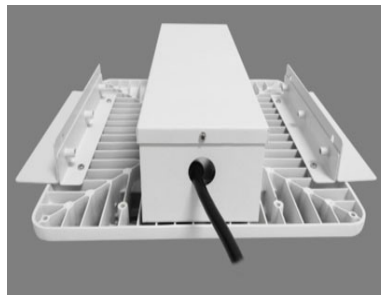
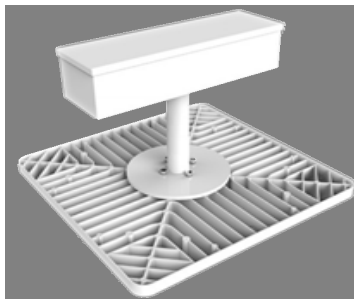
American
Ceiling Type A



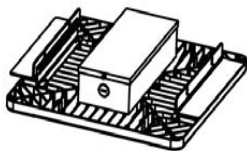
Recessed
Type B



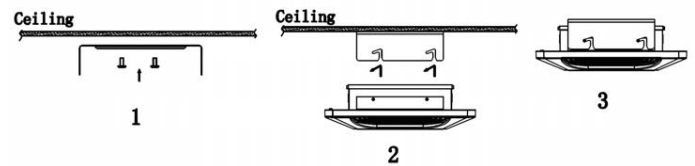
Surface
Type C



Recessed mounting



Surface ceiling mounting

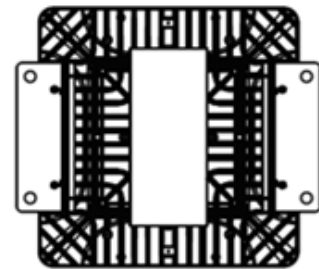
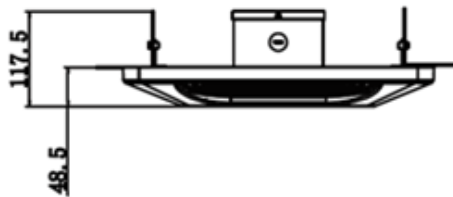
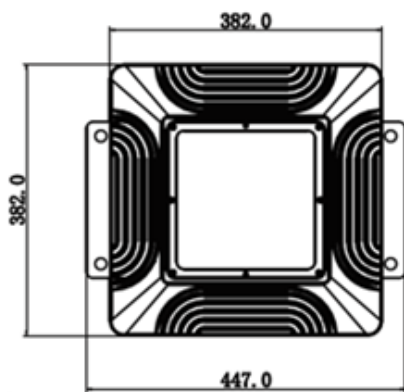


CANOPY LIGHT

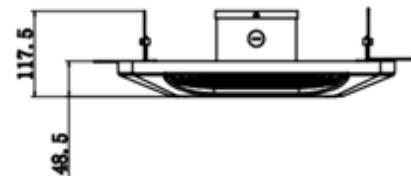
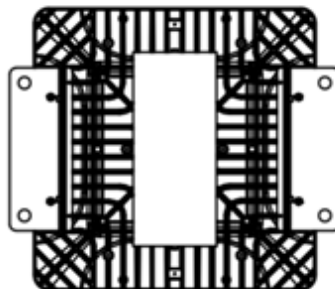
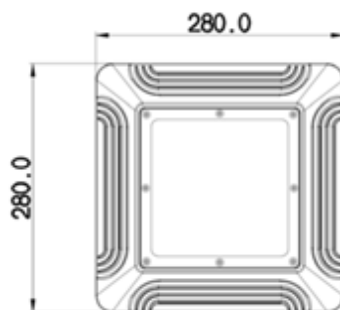
Size For:
100W/ 120W/ 150W



Cut-out size:
L330*W330mm



Size For:
60W / 80W



Cut-out size:
L220*W220mm